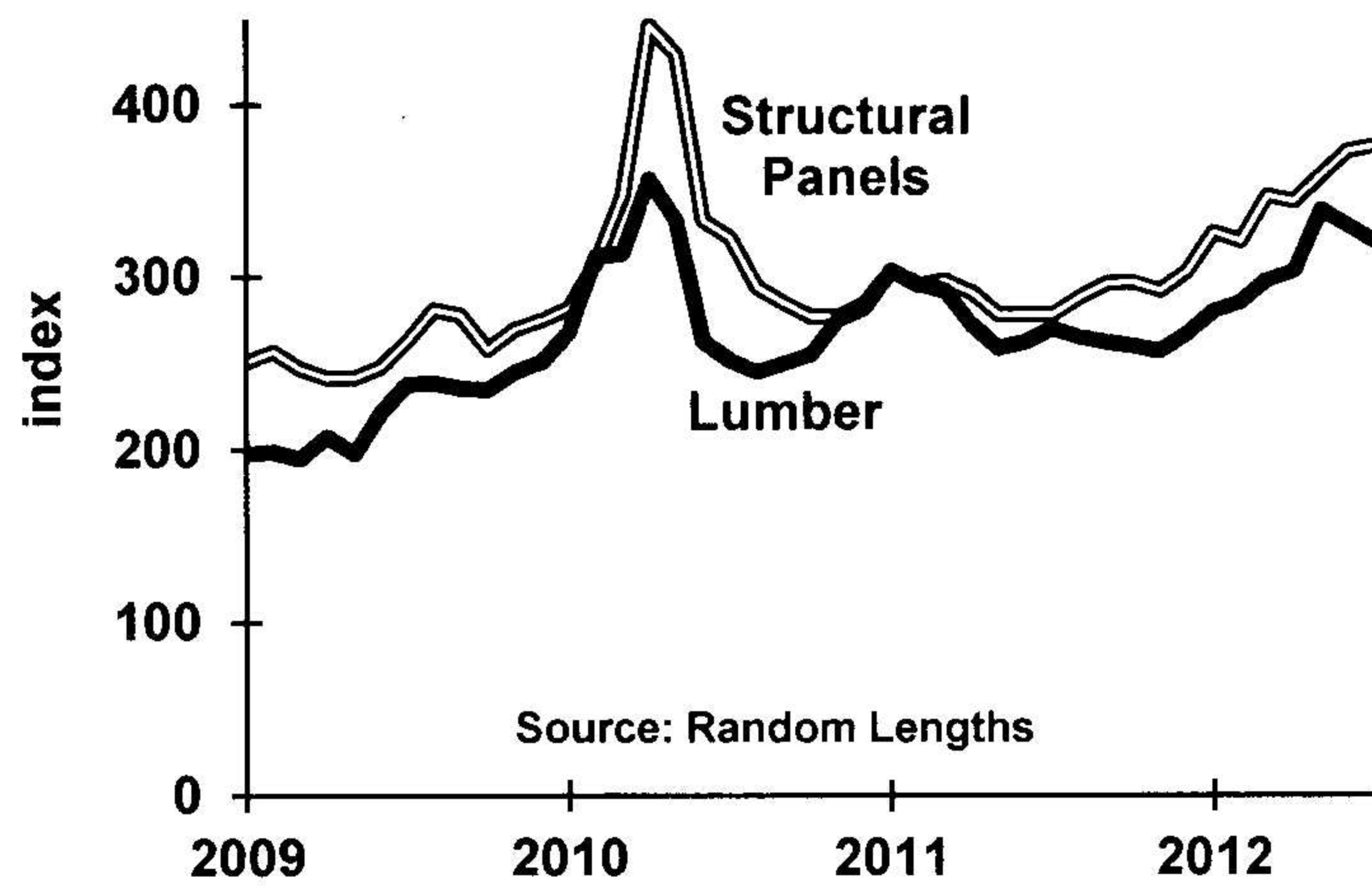
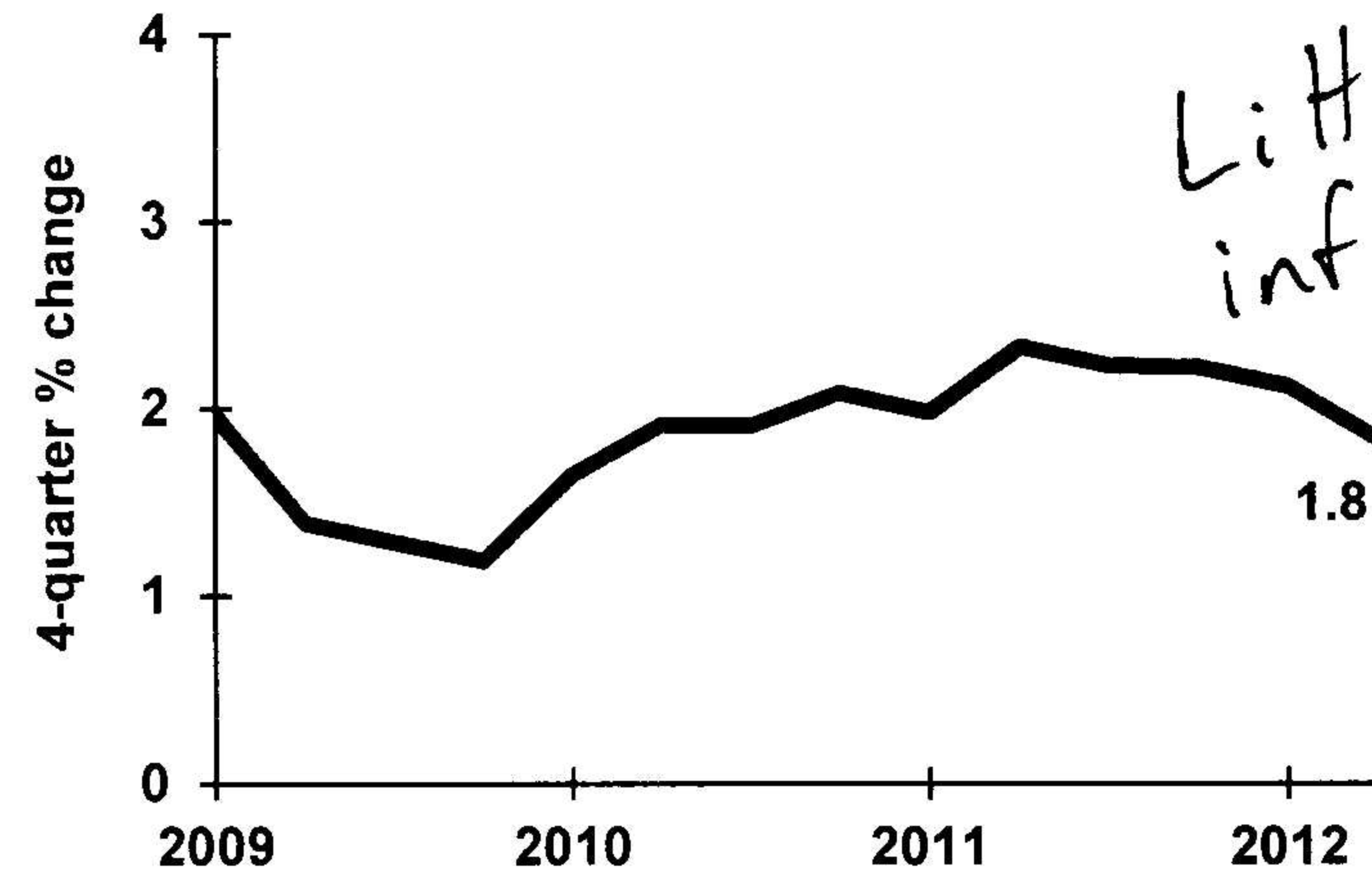


Lumber and Panel Prices



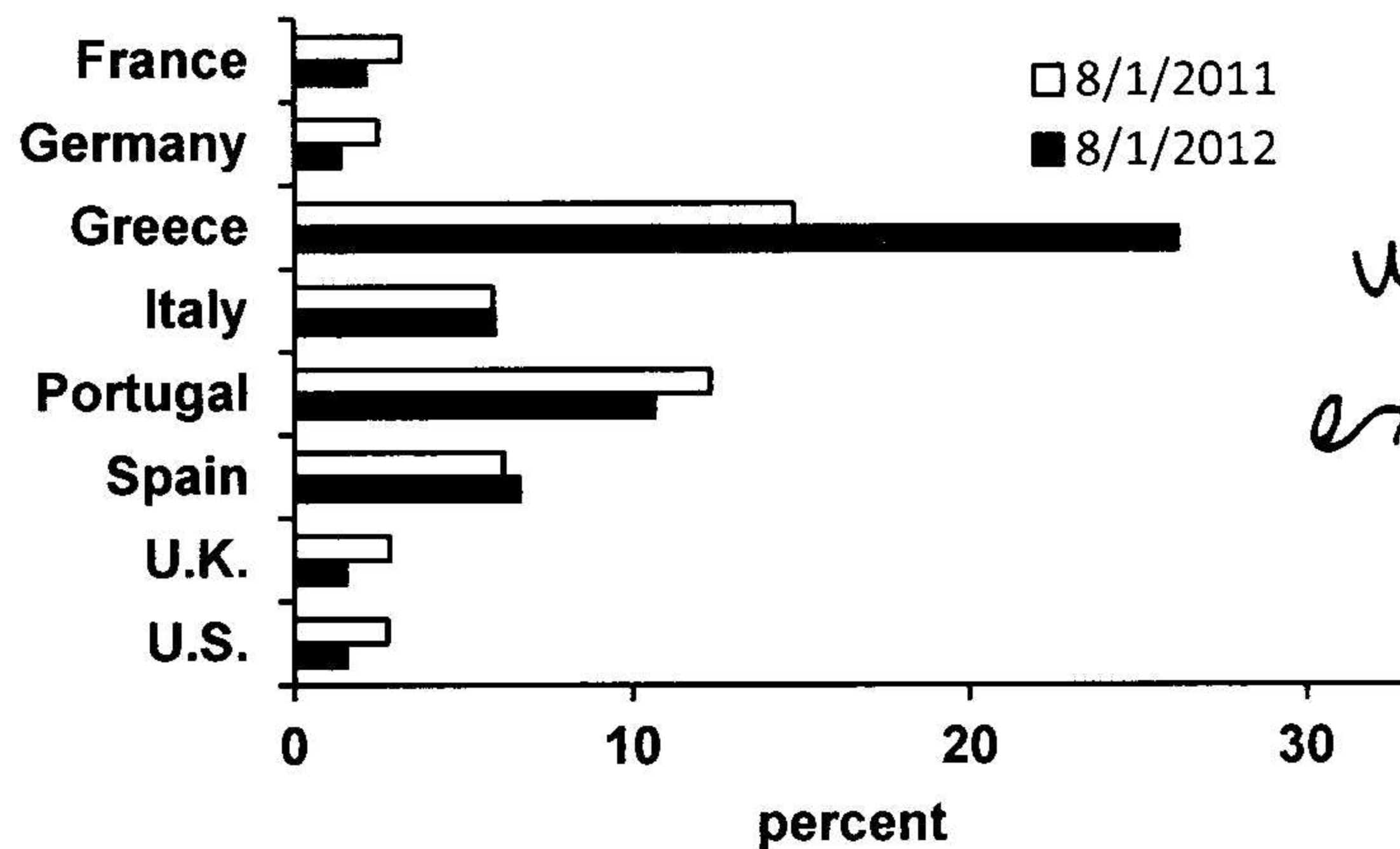
Better demand from housing.

Employment Cost Inflation
including wages and benefits



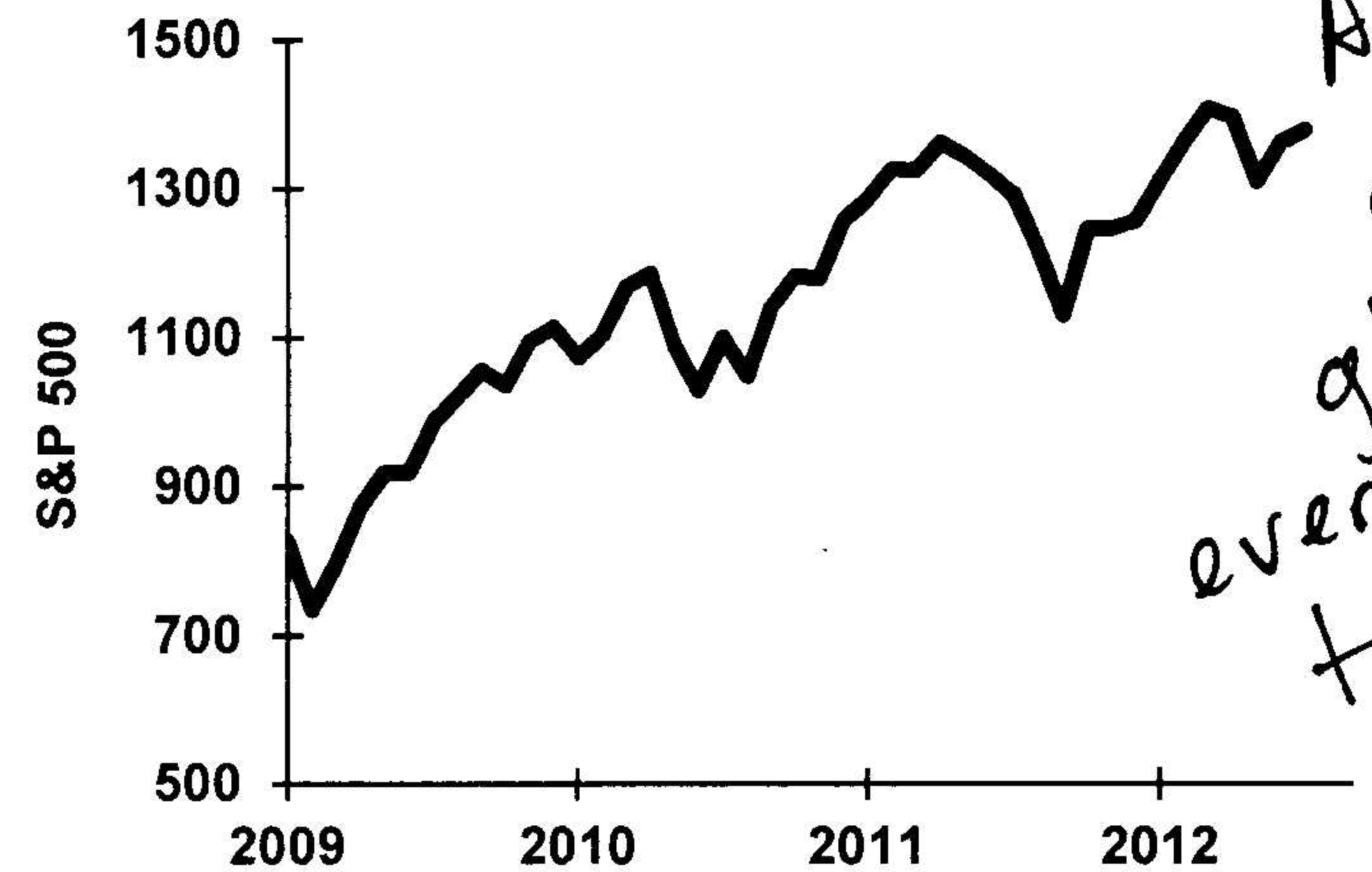
Little inflationary pressure

Interest Rates on 10-year Treasuries



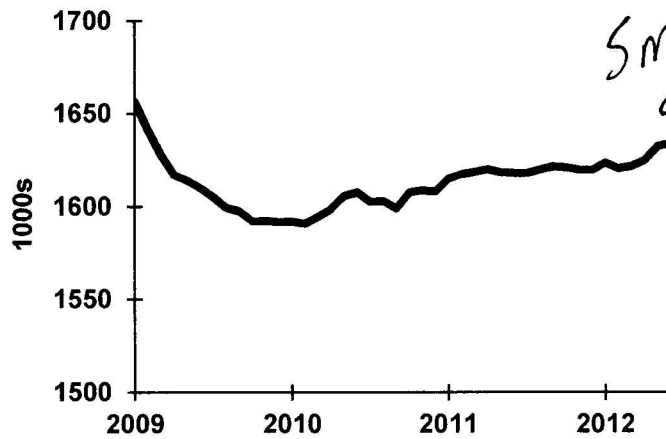
Not much worse, except for Greece.

Stock Market



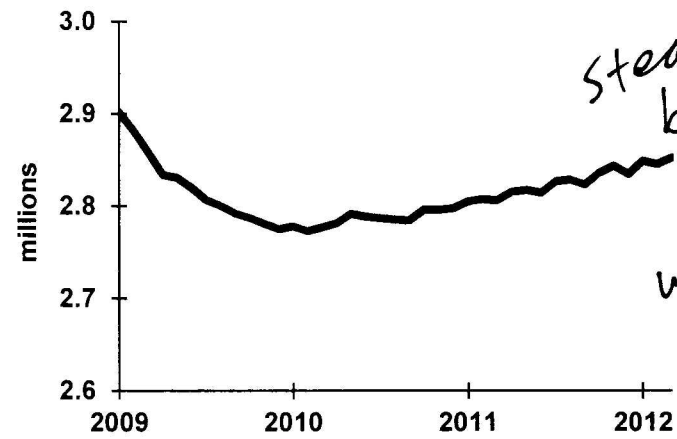
Amazing, given how gloomy everyone seems to be.

Oregon Employment



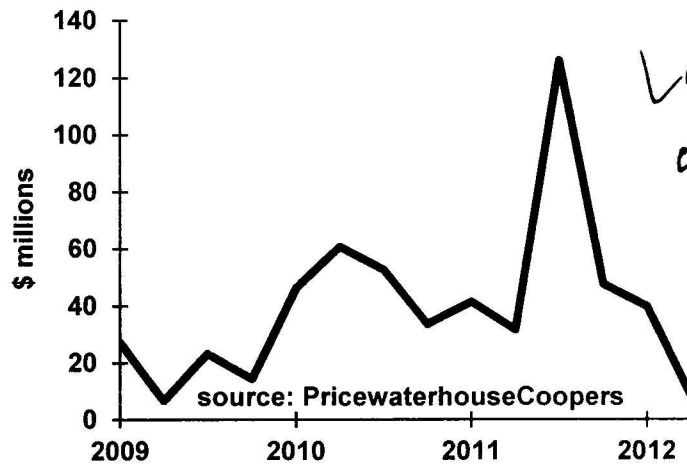
Small gains as we wait for U.S. to improve.

Washington Employment



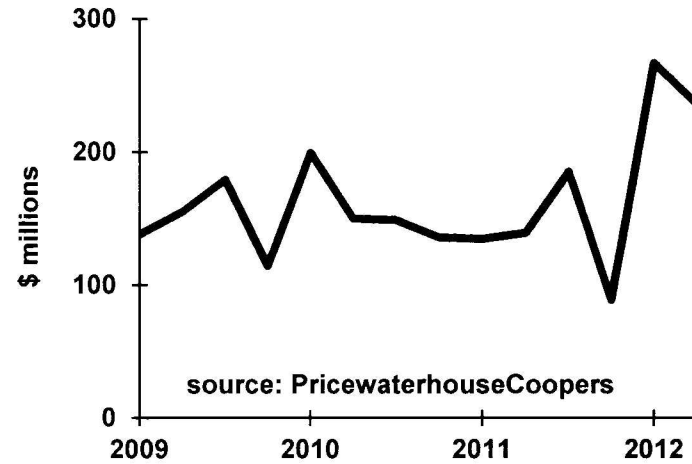
Steady growth, but not as fast as we need.

Oregon Venture Capital



Last year great; second half likely better.

Washington Venture Capital



Some good deals.