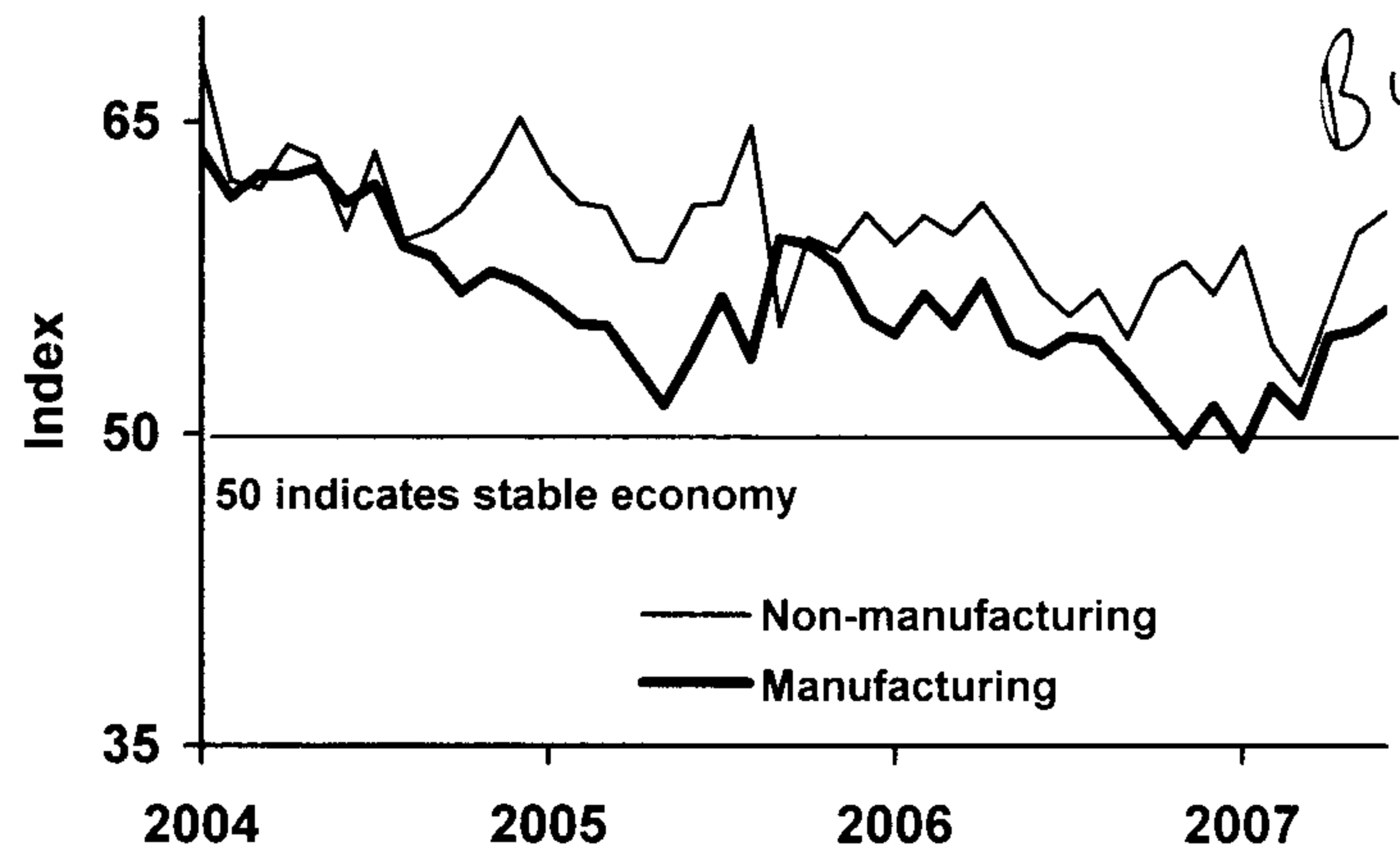


ISM Indexes

formerly Purchasing Managers Index



Businesses showing upturn in recent months

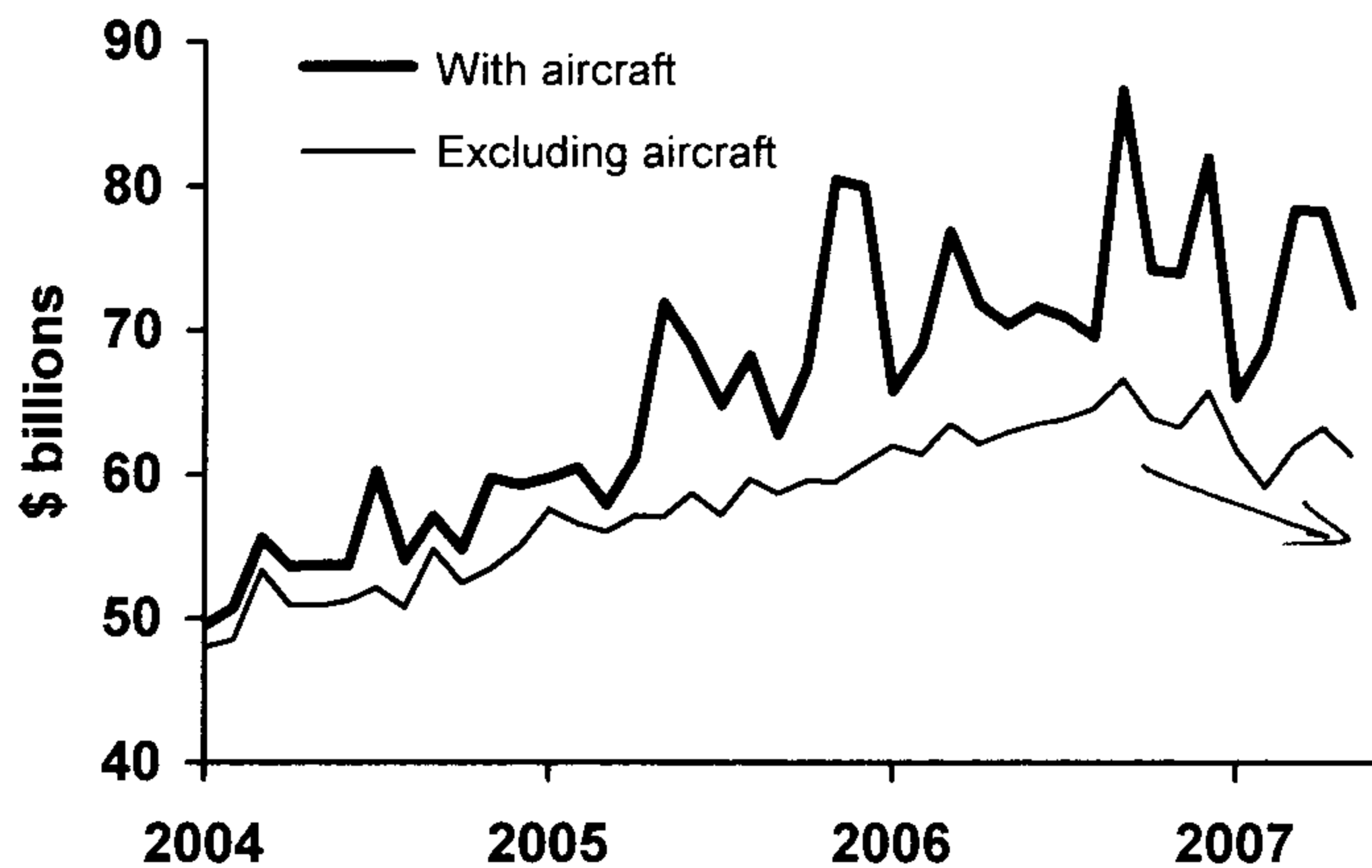
Auto & Light Truck Sales



a troubling downturn, could show consumers feeling the housing downturn.

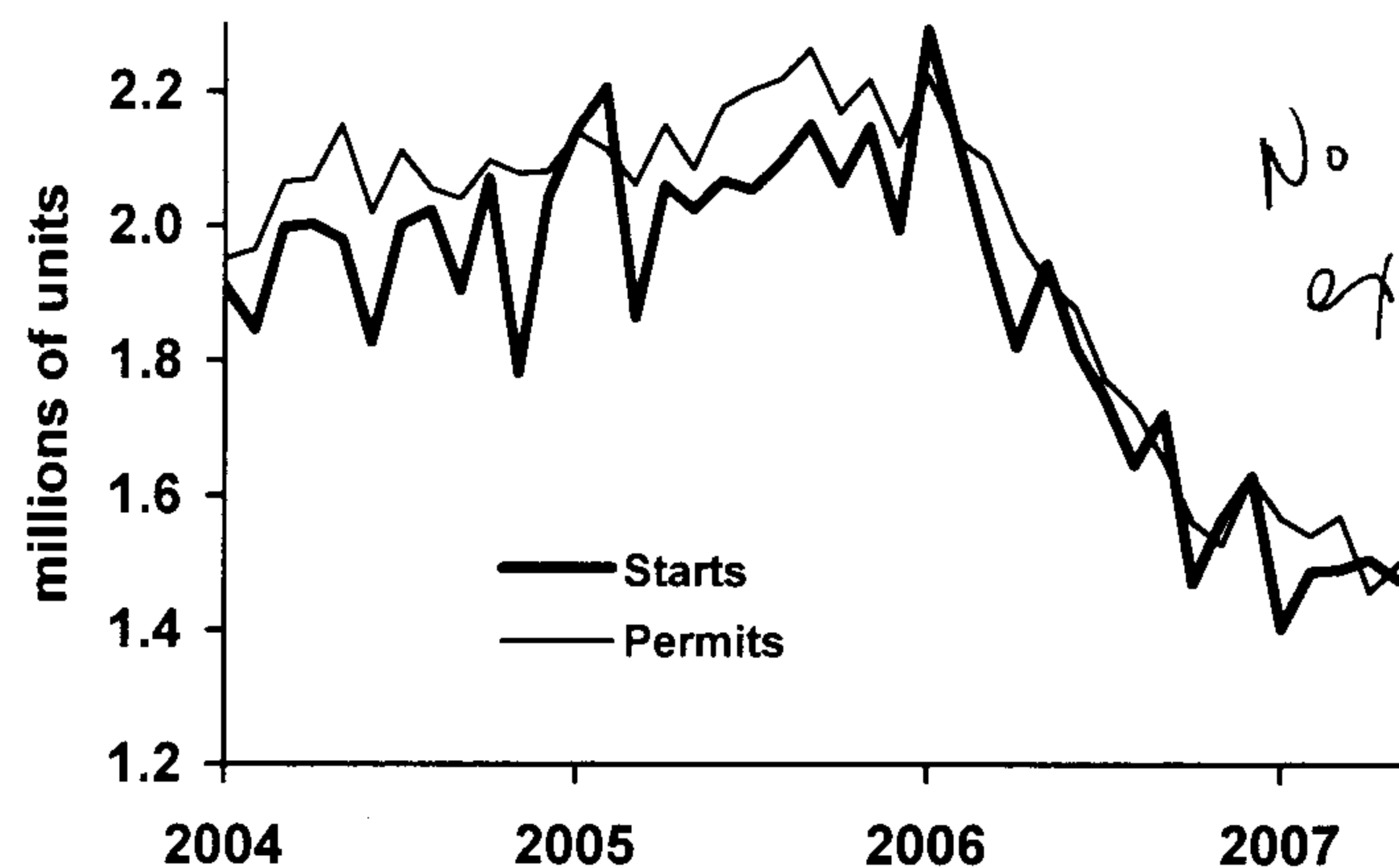
Capital Goods Orders

non-defense



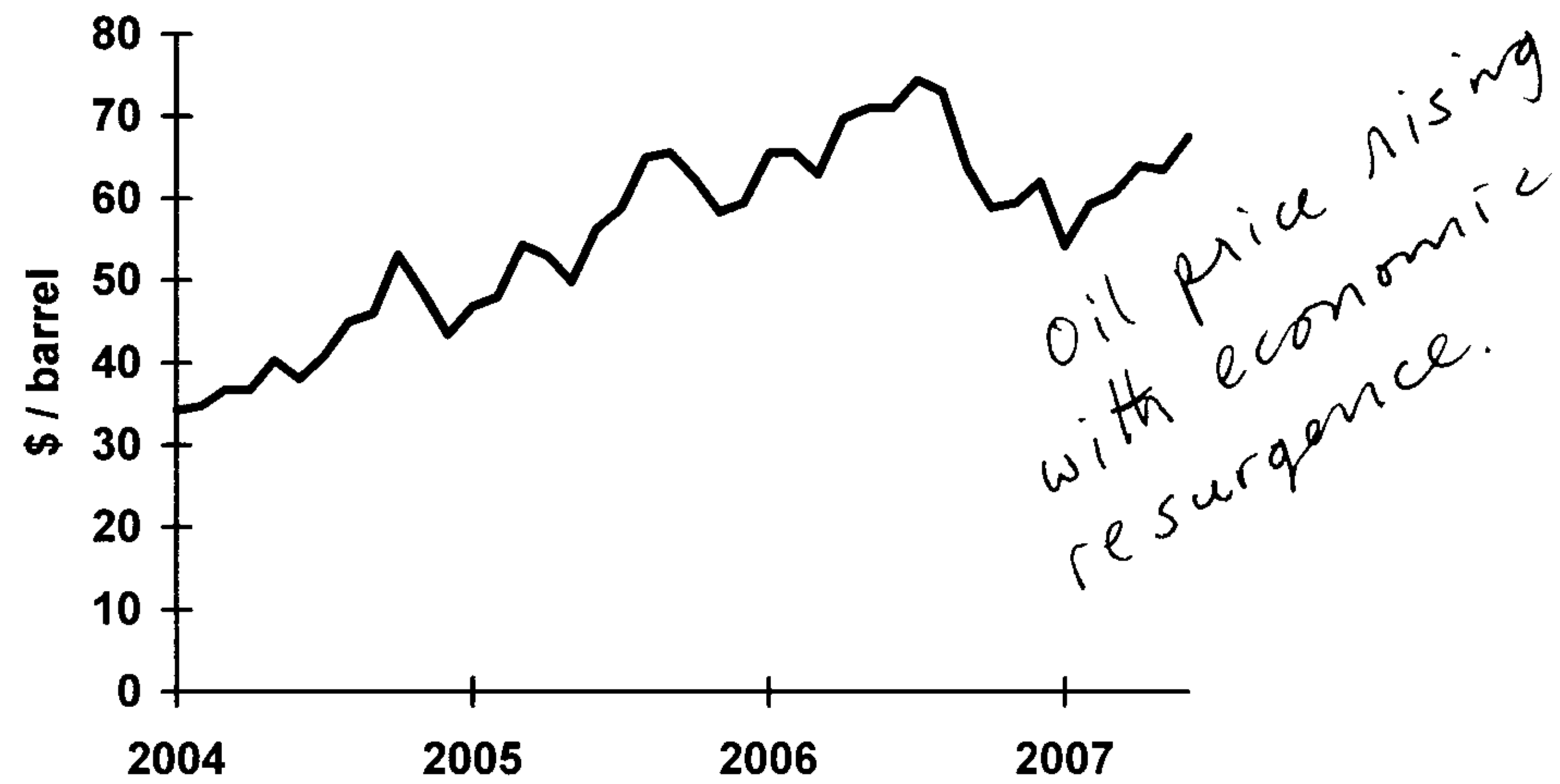
weak non-aircraft orders also worrisome.

Housing Starts & Permits

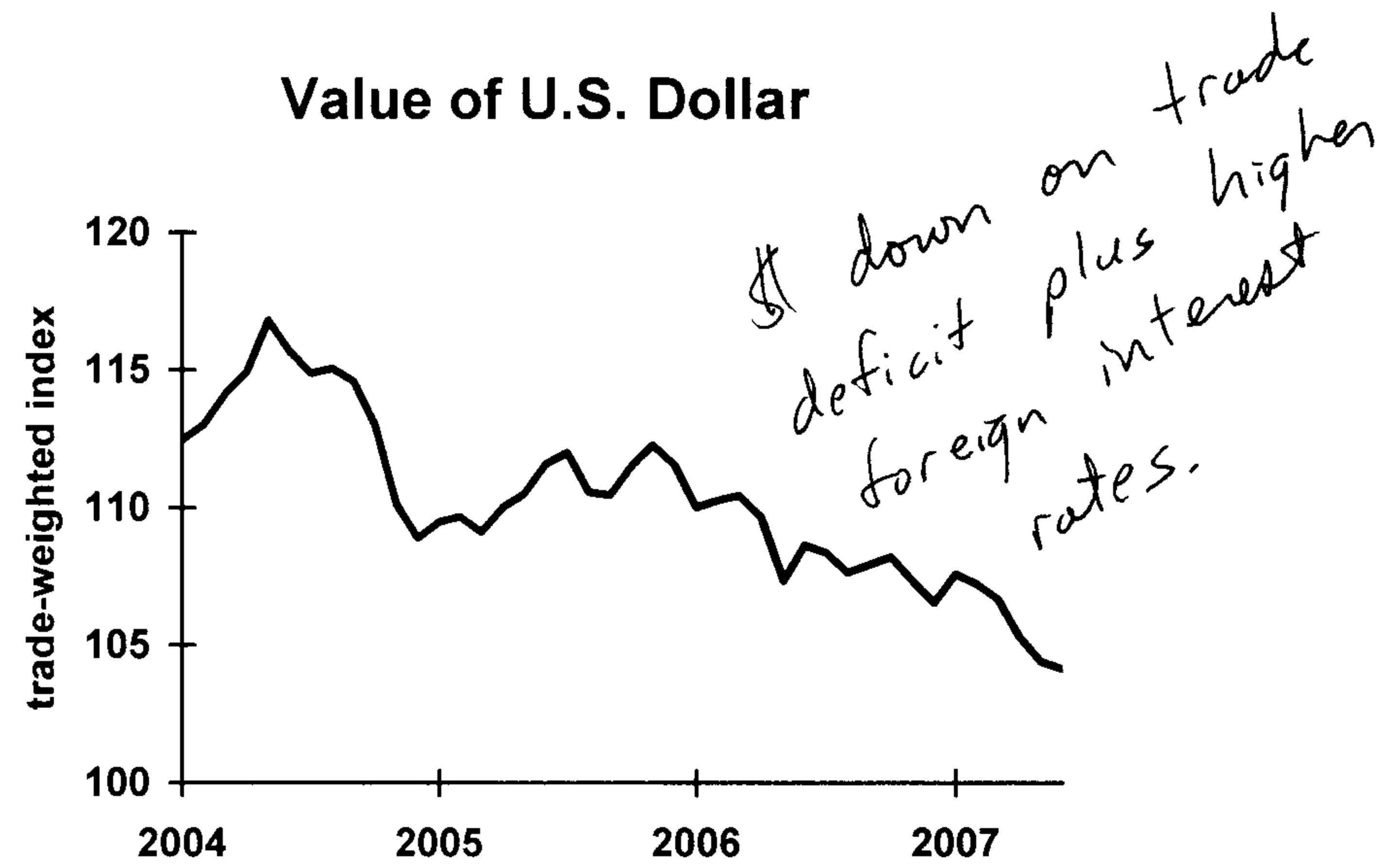


No good news expected for quite some time.

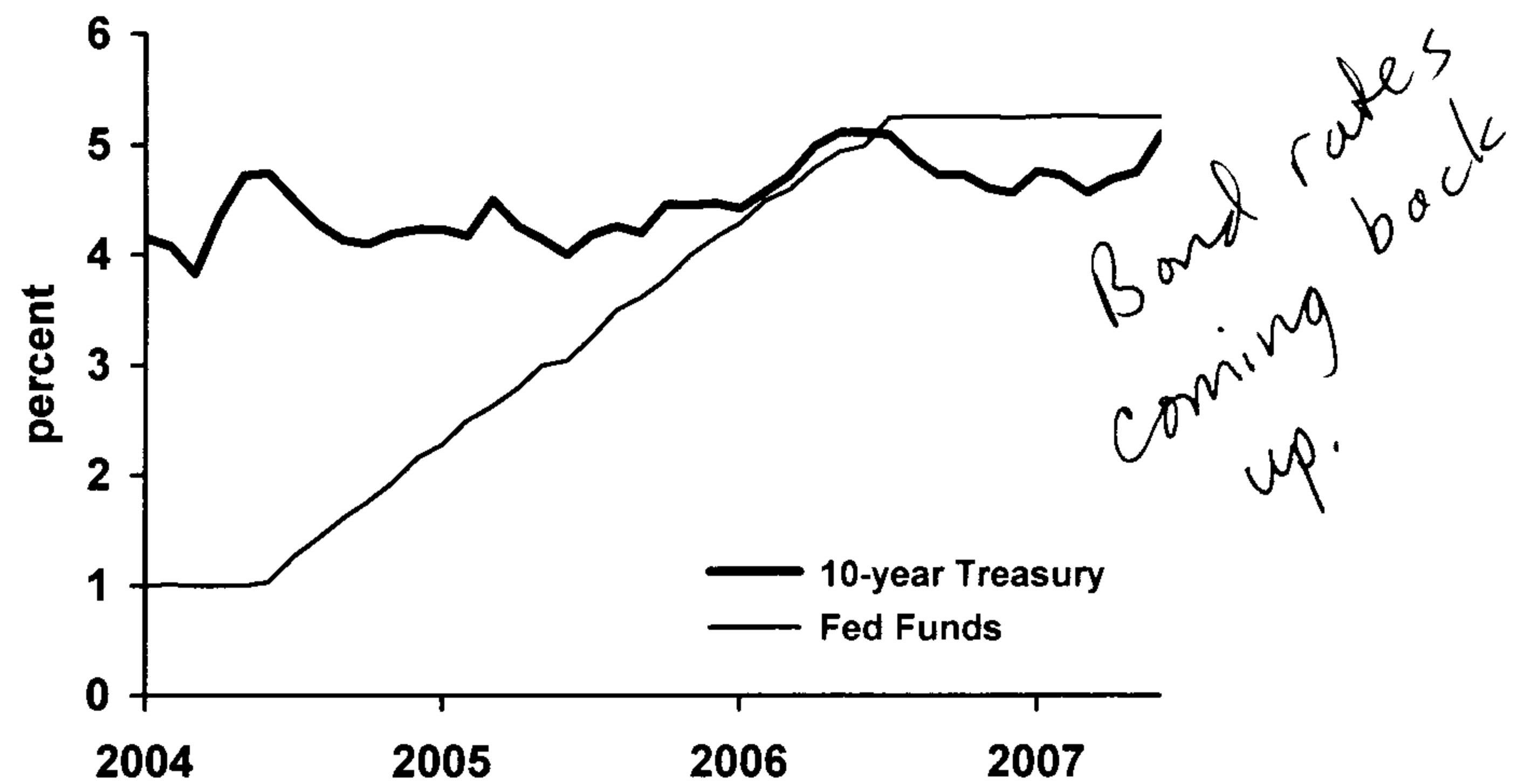
Oil Price



Value of U.S. Dollar



Interest Rates



Stock Market

